

## 250/200 LP IIIr



The pump has a replaceable moulded linatex impeller and thick rubber liners for the best abrasion resistance, and a good hydraulic performance. Three unique Linatex gland seal options are available. The cast iron bearing assembly and high tensile steel shaft, is assembled as a cartridge and can be adjusted axially to maintain hydraulic clearances as the impeller and liners wear.

The bearings are designed for long life with grease lubrication. They are sealed with double grease seals and a protective flinger. The rigid pedestals are made in Cast iron or welded steel. The whole unit is protected from overall corrosion with an engineered paint system.

Standard curve  
Arrangement drawing  
Sectioned drawing

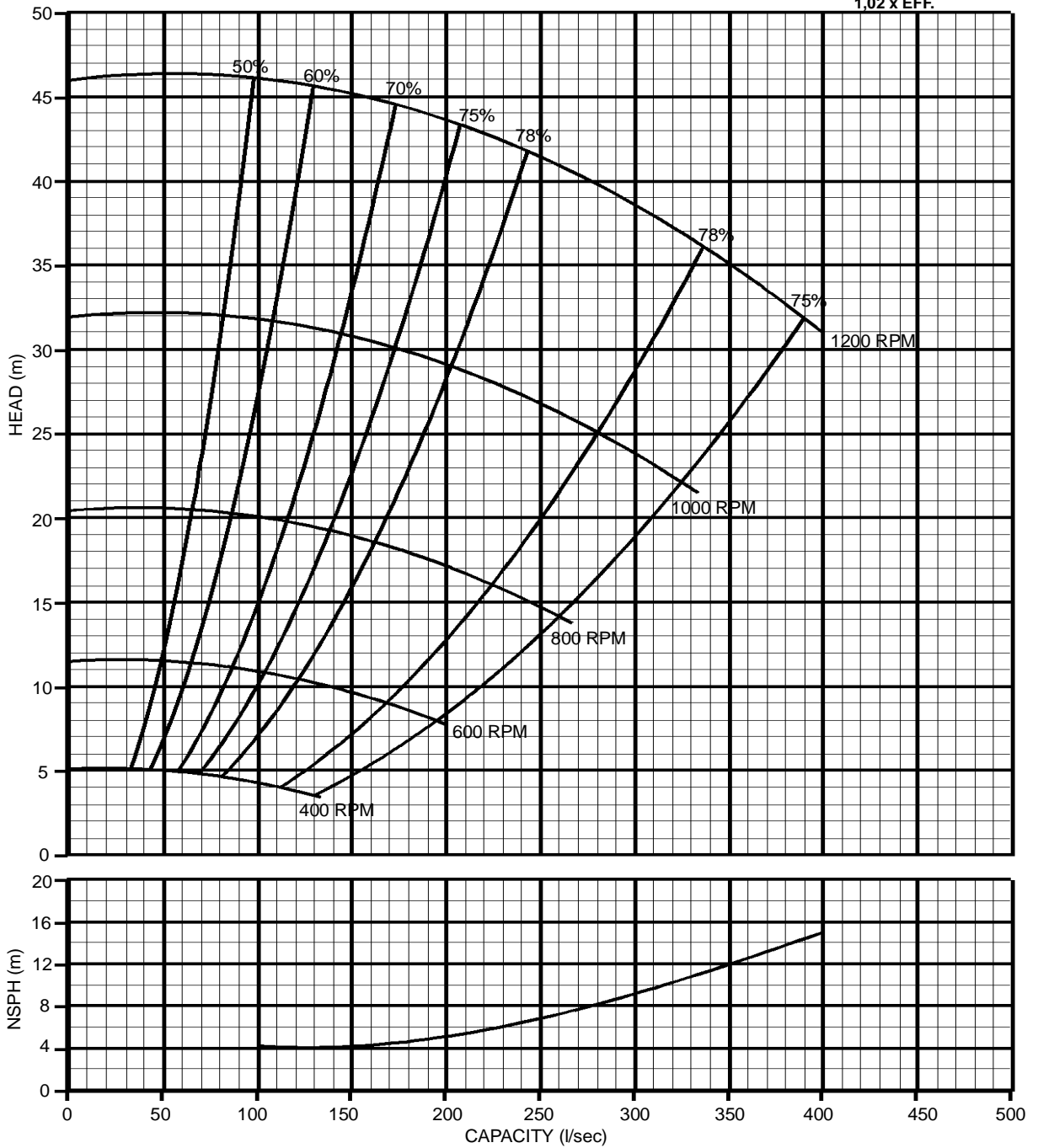
Standard materials and parts list  
Bearing Assembly  
Motor support, Maintenance arm assembly  
Typical Bearing Assembly Drawing

Dry gland assembly  
Packed gland assembly  
Hydrostatic gland assembly  
Typical Dry Gland Drawing  
Typical Packed Gland Drawing  
Typical Hydrostatic Gland Drawing

250/200 LP IIIr Standard curve

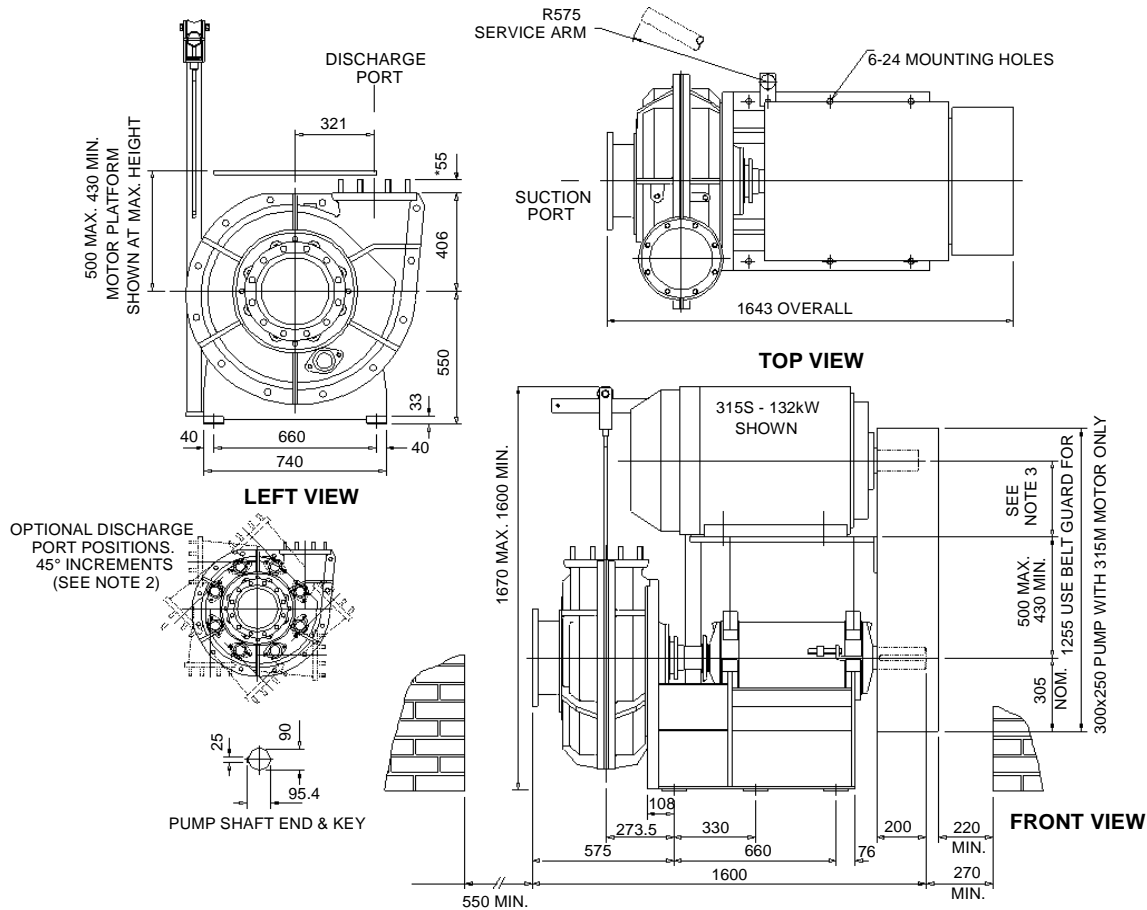
IMPELLER DIA : 454 mm	MAX SPEED : 1200 RPM	MAX SOLIDS : 80 mm	CURVE NO : 200/2.99
No. OF VANES : 4	MAX KW : 275 KW		DATE : 28/01/97

$$\text{KW POWER} = \frac{\text{L/s} \times \text{m} \times \text{SG.}}{1.02 \times \text{EFF.}}$$





## 250/200 LP IIIr Arrangement drawing



**NOTES:**

1) MAX. FLANGE LOADS & TURNING MOMENTS ARE AVAILABLE, BUT PUMP MUST NOT BE USED AS AN ANCHOR. ALL PIPES MUST BE INDEPENDENTLY SUPPORTED.

2) POSITION OF EYEBOLT & DRAIN PLUG WILL ALSO ROTATE THE SAME AMOUNT AS THE DISCHARGE PORT.

3) ADD MOTOR HEIGHT TO OBTAIN PULLEY CENTRE DISTANCE.

FLANGE DETAILS TO BS4504 (mm)					
	PCD.	STUD	HOLE	No. OFF	*STUD LENGTH
SUCTION	350	-	22	12	-
DISCHARGE	295	M20	-	8	55

FLANGE DETAILS TO ASA125 (inch)					
	PCD.	STUD	HOLE	No. OFF	*STUD LENGTH
SUCTION	14.25	-	25	12	-
DISCHARGE	11.75	3/4	-	8	2.0

\* STUD LENGTH PROTRUDING

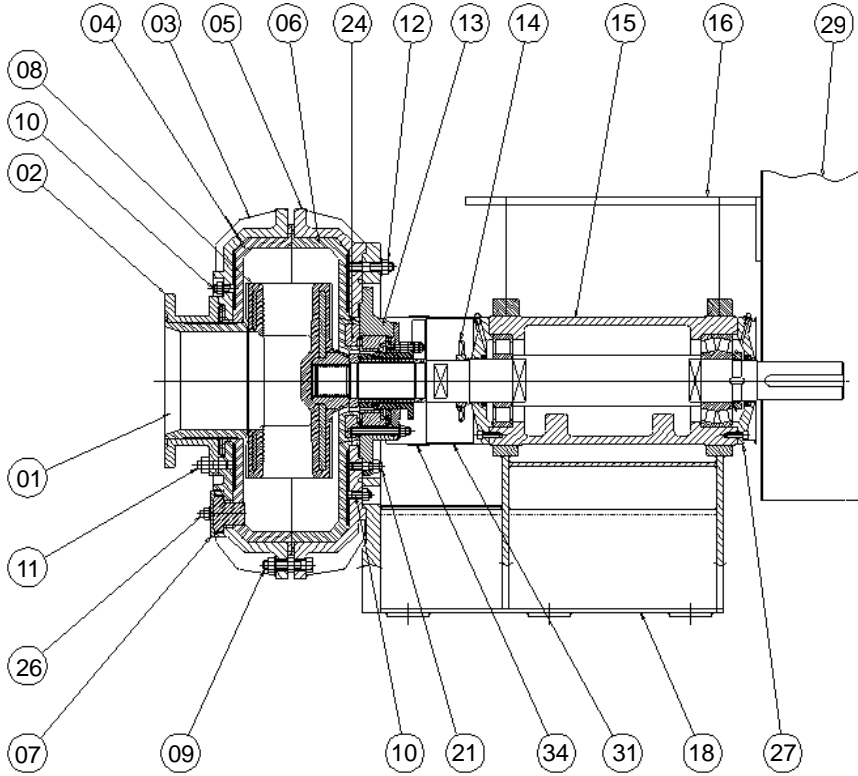
REFERENCE DRAWINGS	
DESCRIPTION	DRAWING No.
PUMP ASSEMBLIES	GA-D-200, GA-H-200 & GA-P-200
BEARING ASSEMBLY	15-200
GLAND ASSEMBLIES	GD13-200, GH13-200 & GP13-200
MOTOR SUPPORT ASSY.	16-200
SERVICE ARM ASSEMBLY	28-200
BELT GUARD	29-200
SHAFT GUARD	31-200

WEIGHT OF PUMP 1250kg.  
 WEIGHT OF 315S MOTOR 940kg.  
 WEIGHT OF 315SM MOTOR 1300kg.

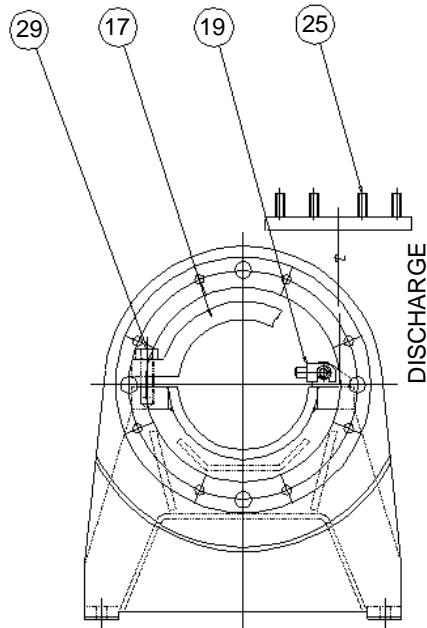
MAX. MOTOR FRAME: 315S - 132kW WITH STANDARD MOTOR PLATFORM.

MAX. MOTOR FRAME: 315SM - 200kW WITH EXTENDED MOTOR PLATFORM.

## 250/200 LP IIIr Sectioned drawing



SECTION THROUGH PUMP ASSEMBLY



FRONT VIEW ON PEDESTAL