



## 200/150 LP IIIr



The pump has a replaceable moulded linatex impeller and thick rubber liners for the best abrasion resistance, and a good hydraulic performance. Three unique Linatex gland seal options are available. The cast iron bearing assembly and high tensile steel shaft, is assembled as a cartridge and can be adjusted axially to maintain hydraulic clearances as the impeller and liners wear.

The bearings are designed for long life with grease lubrication. They are sealed with double grease seals and a protective flinger. The rigid pedestals are made in Cast iron or welded steel. The whole unit is protected from overall corrosion with an engineered paint system.

Standard curve  
Arrangement drawing  
Sectioned drawing

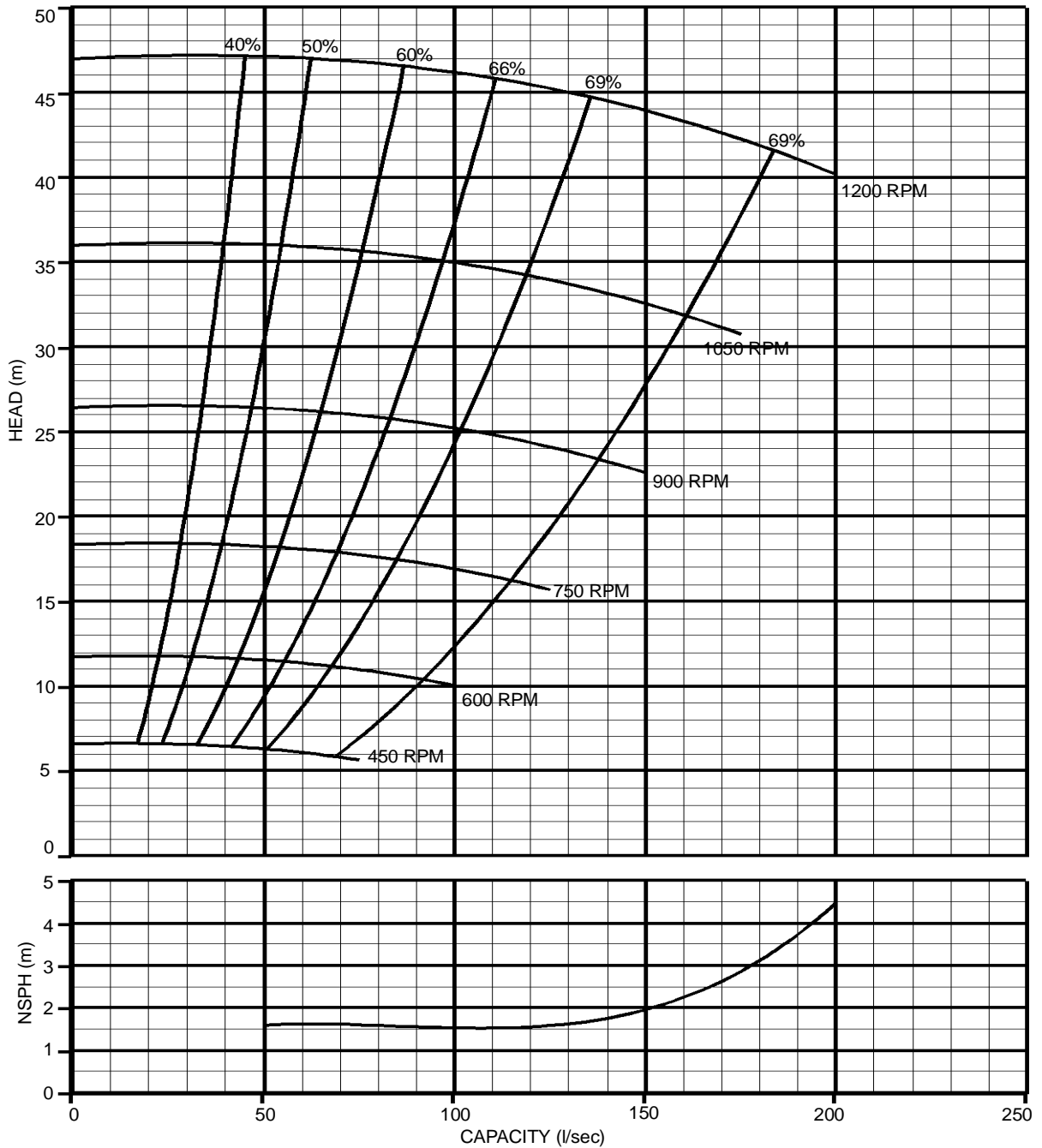
Standard materials and parts list  
Bearing Assembly  
Motor support, Maintenance arm assembly  
Typical Bearing Assembly Drawing

Dry gland assembly  
Packed gland assembly  
Hydrostatic gland assembly  
Typical Dry Gland Drawing  
Typical Packed Gland Drawing  
Typical Hydrostatic Gland Drawing

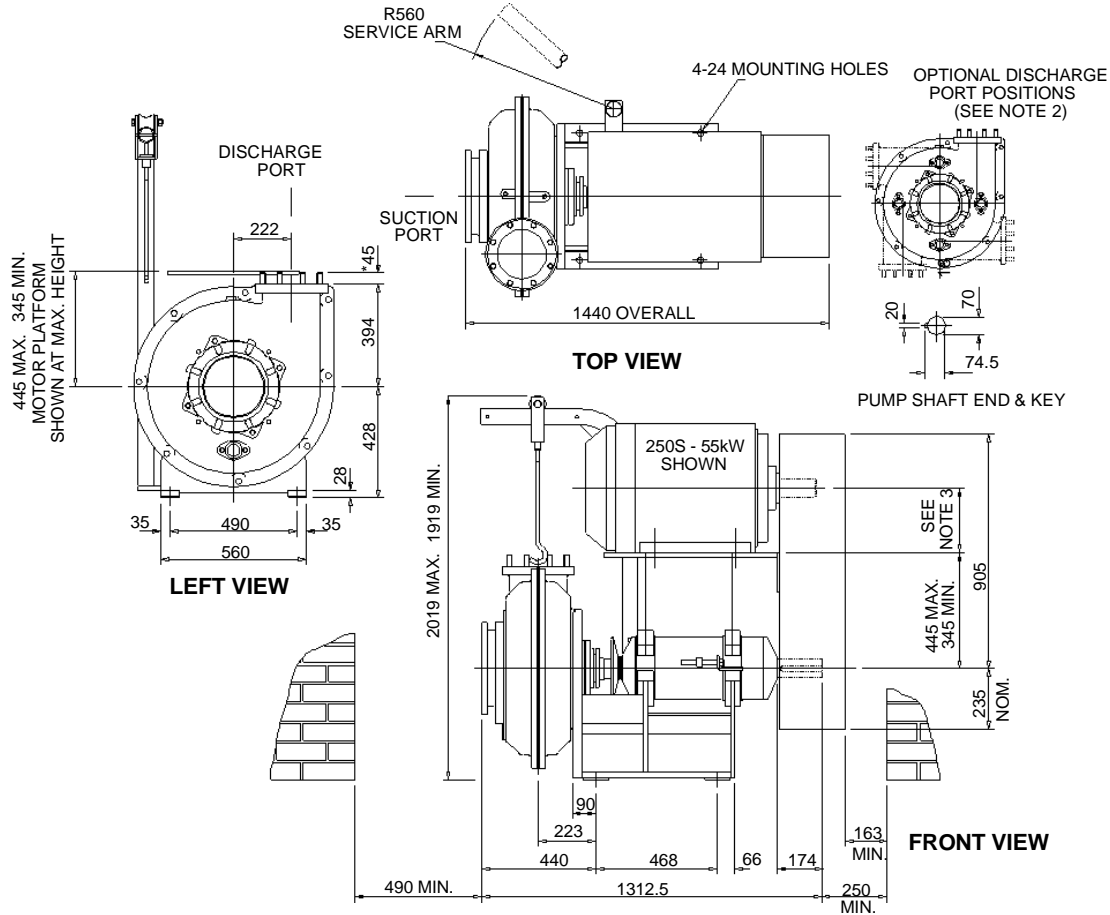
200/150 LP IIIr Standard curve

IMPELLER DIA : 432 mm	MAX SPEED : 1200 RPM	MAX SOLIDS : 50 mm	CURVE NO : 150/2.99
No. OF VANES : 4	MAX KW : 145 KW		DATE : 28/01/97

$$KW\ POWER = \frac{L/s \times m \times SG.}{1,02 \times EFF.}$$



## 200/150 LP IIIr Arrangement drawing



**NOTES:**

1) MAX. FLANGE LOADS & TURNING MOMENTS ARE AVAILABLE, BUT PUMP MUST NOT BE USED AS AN ANCHOR. ALL PIPES MUST BE INDEPENDENTLY SUPPORTED.

2) POSITION OF EYEBOLT & DRAIN PLUG WILL ALSO ROTATE THE SAME AMOUNT AS THE DISCHARGE PORT.

3) ADD MOTOR HEIGHT TO OBTAIN PULLEY CENTRE DISTANCE.

FLANGE DETAILS TO BS4504 (mm)					
	PCD.	STUD	HOLE	No. OFF	*STUD LENGTH
SUCTION	295	-	22	8	-
DISCHARGE	240	M20	-	8	45

FLANGE DETAILS TO ASA125 (inch)					
	PCD.	STUD	HOLE	No. OFF	*STUD LENGTH
SUCTION	11.5	-	22	8	-
DISCHARGE	9.5	3/4	-	8	2.0

\* STUD LENGTH PROTRUDING

REFERENCE DRAWINGS	
DESCRIPTION	DRAWING No.
PUMP ASSEMBLIES	GA-D-150, GA-H-150 & GA-P-150
BEARING ASSEMBLY	15-150
GLAND ASSEMBLIES	GD13-150, GH13-150 & GP13-150
MOTOR SUPPORT ASSY.	16-150
SERVICE ARM ASSEMBLY	28-150
BELT GUARD	29-150
SHAFT GUARD	31-150

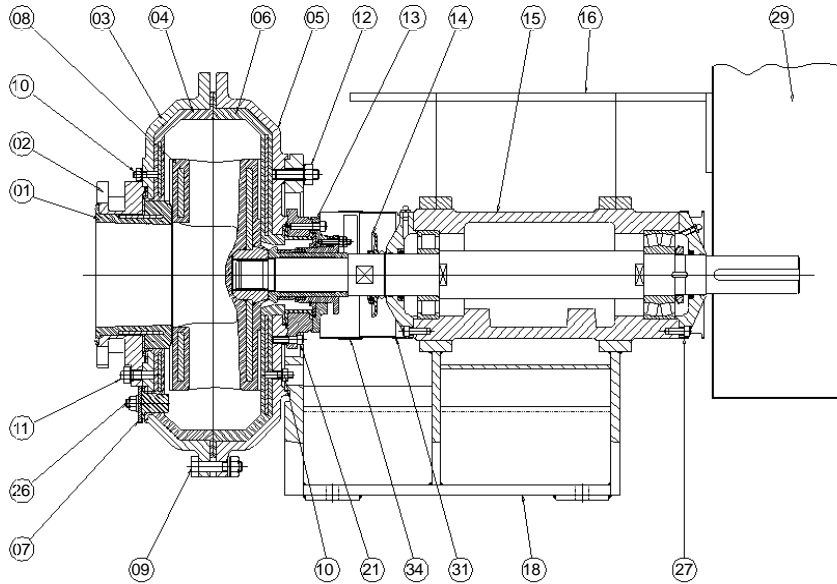
WEIGHT OF PUMP 736kg.  
 WEIGHT OF 250S MOTOR 455kg.  
 WEIGHT OF 280S MOTOR 610kg.  
 WEIGHT OF 315S MOTOR 940kg.

MAX. MOTOR FRAME: 250S - 55kW WITH STANDARD MOTOR PLATFORM.

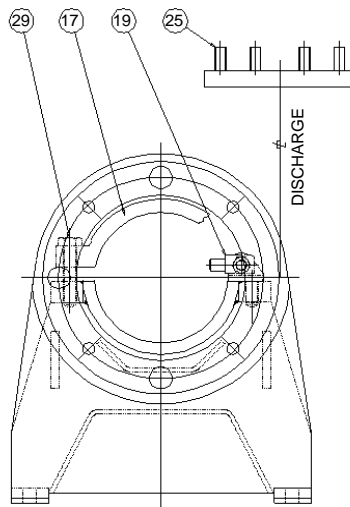
MAX. MOTOR FRAME: 280S - 90kW WITH EXTENDED MOTOR PLATFORM.

MAX. MOTOR FRAME: 315S - 132kW WHEN MOUNTED TO SIDE OF PUMP ON GUIDE RAILS.

## 200/150 LP IIIr Sectioned drawing



SECTION THROUGH PUMP ASSEMBLY



FRONT VIEW ON PEDESTAL